

COURSE MAP

GETTING THERE ON RACE DAY

From Dubai head north on Emirates Road (311) until it narrows from 3 lanes to 2 shortly after ends at a large roundabout. Take the RIGHT (first) exit sign posted Ras Al Khaimah (Highway 11) and stay straight on this road for 6.4km where you will come to the Clock Roundabout. Continue straight over this roundabout for a further 4km where you will come to another, smaller roundabout. Take the first exit (2 o'clock angle) which takes you over a steep bridge (crossing the harbor entrance) and continue along the road, past the fire station and the EPPCO Station on your right then turn immediately into the Manar Mall (Race Car Park) as signposted.

Although Khuzam Road from Clock Roundabout will remain partially open, there will be **no access** that leads to the Start Line.

GPS Coordinates to the Race Car Park:
(25°47'9.808"N, 55°57'56.3148"E)

PARKING

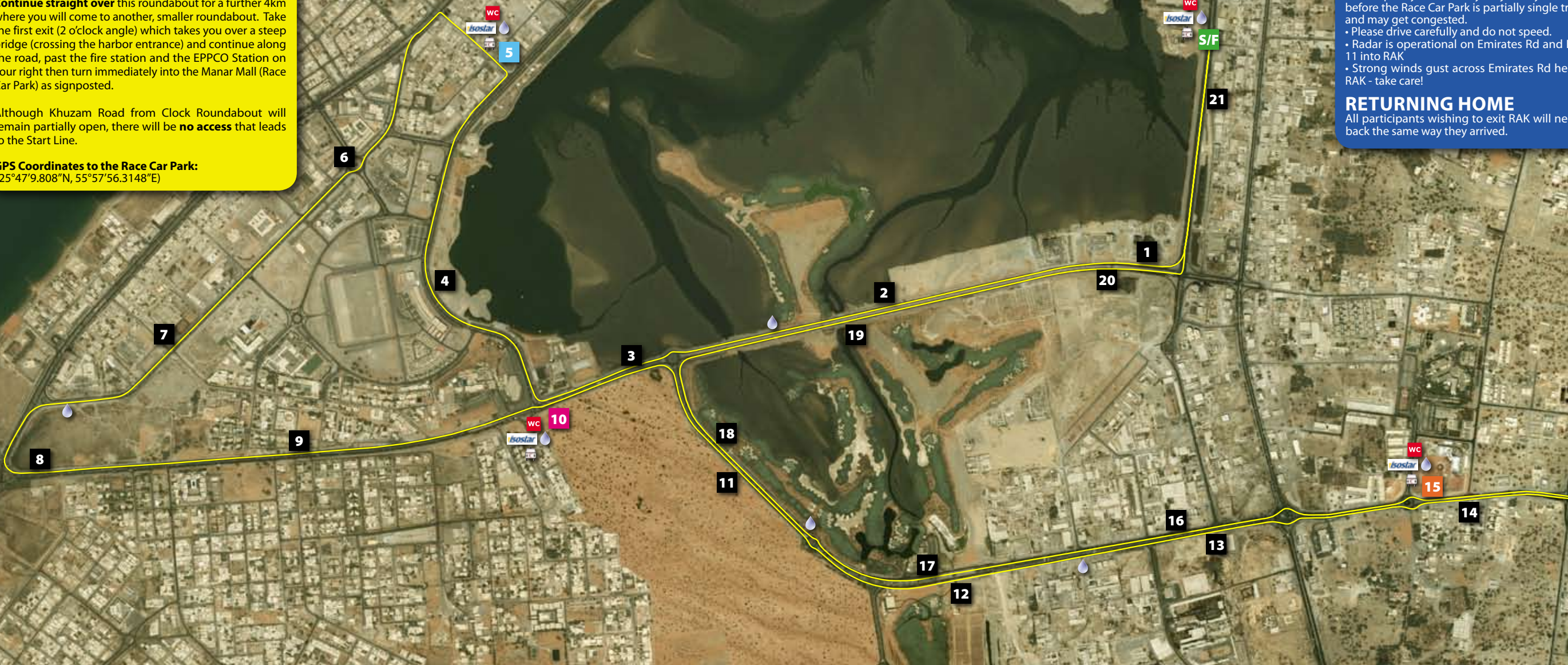
The Manar Mall car park is the designated Race Car Park and is no more than 100m from the Start Area. Please follow directions within the parking lot.

TRAVEL TIPS

- Leave plenty of time for your journey - the last 4km before the Race Car Park is partially single track road and may get congested.
- Please drive carefully and do not speed.
- Radar is operational on Emirates Rd and Highway 11 into RAK
- Strong winds gust across Emirates Rd heading to RAK - take care!

RETURNING HOME

All participants wishing to exit RAK will need to go back the same way they arrived.



- | | | | |
|------------|--|-----------|-----------------|
| S/F | 1/2 M Start & Finish/Green Relay Start | | Water Station |
| 5 | Blue Relay Start | | Isostar Station |
| 10 | Pink Relay Start | | Medical Station |
| 15 | Orange Relay Start | WC | Toilets |
| 0 | Km Marker | P | Race Car Park |



Course Map and Satellite Imagery courtesy of



Course Elevation Chart

